

CAPACITY BUILDING FOR THE INTRODUCTION OF ENERGY MANAGEMENT IN PUBLIC BUILDINGS OF THE PROVINCE OF VOJVODINA

Assist. Prof. Dr Jovan PETROVIĆ



Regional Conference
Sustainable Energy Management in
Public Buildings - from Policy to
Local Action

GTZ, Budva, Hotel Splendid,
27th to 29th April, 2010

A hand holding a set of keys is visible in the upper left corner. The background is a blurred image of a car's interior, showing a red gear shift knob and a steering wheel. The overall lighting is bright and soft.

CONTENT:

- INTRODUCTION
- PROPOSAL
- STRUCTURE AND RESPONSIBILITIES
- STEPS FOR IMPLEMENTATION

- **Energy cost & consumption** in public buildings:
 - **SEC** in the schools **150-350 kWh/m²a** (even more)
 - **Energy cost** for public buildings is **high**
 - **The budget** for energy consumption in public buildings has to be **reduce**
 - **Emission** from this energy consumption has to be **reduce**
- **Lack of:**
 - **Systematic** actions in EMS, EE & RES
 - **Knowledge** about EMS (general, all levels)
 - **Human capacities** (decision makers and local level too)
 - **Investment** for EMS, EE & RES

The project:

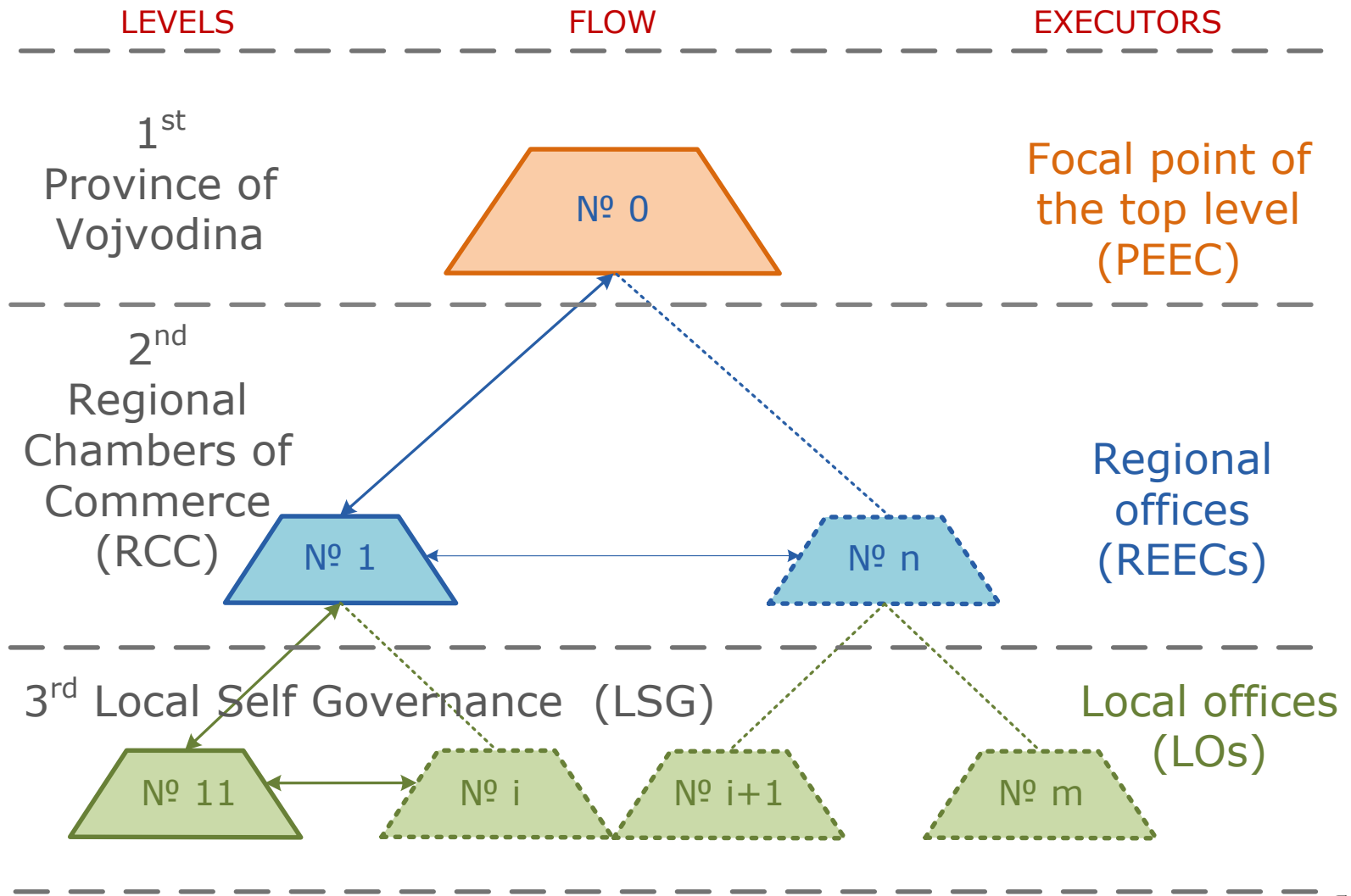
“CAPACITY BUILDING FOR THE INTRODUCTION OF ENERGY MANAGEMENT IN PUBLIC BUILDINGS OF THE PROVINCE OF VOJVODINA”

will:

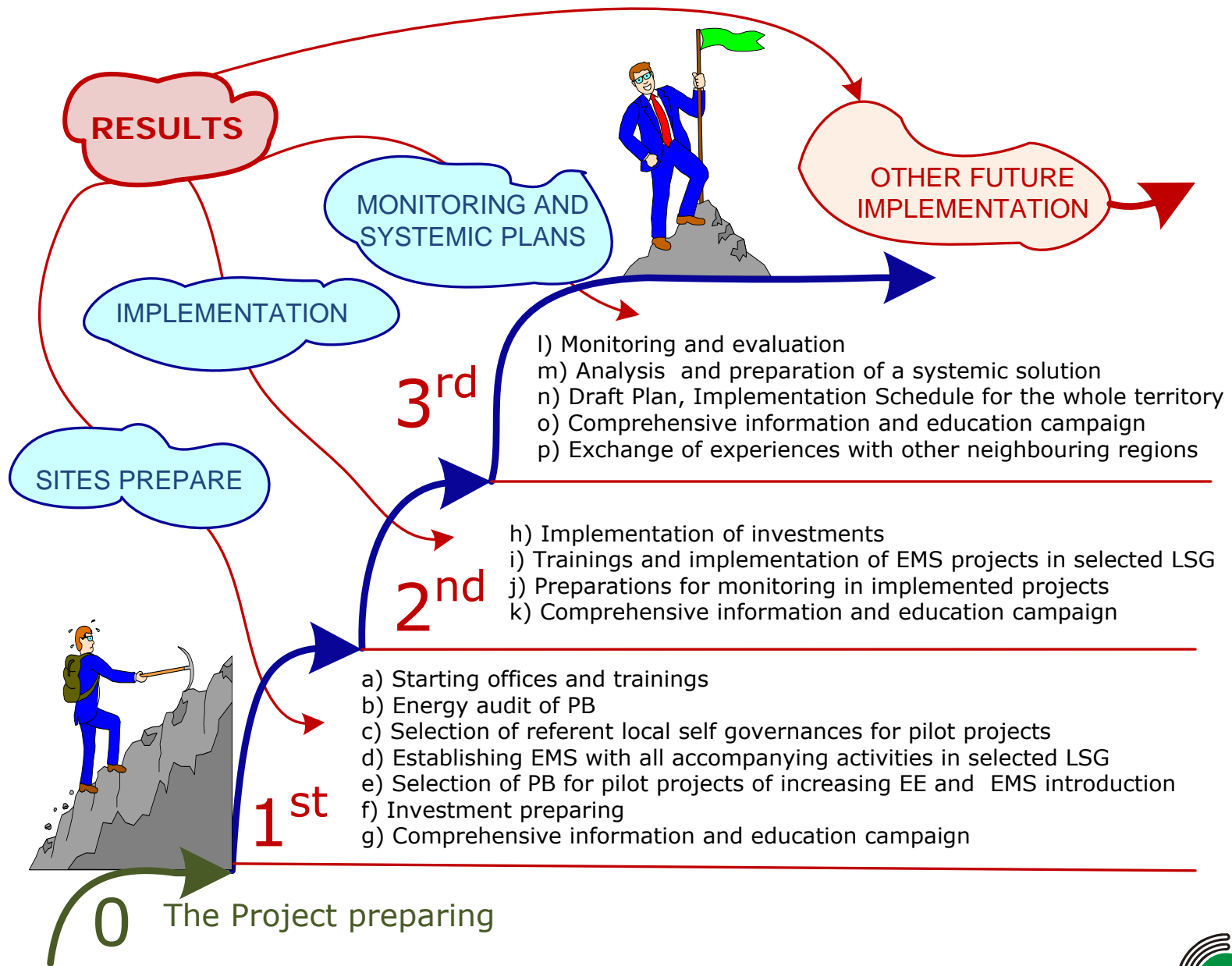
- **Resolve** accumulated problems relevant to energy inefficiency of public buildings owned by provincial and local authorities and
- **Create** necessary prerequisites for the preparation and implementation of systemic plans which will change in the programmed manner current unfavourable and unviable situation in this sector from the aspects of:
 - energy
 - economy
 - ecology



STRUCTURE AND RESPONSIBILITIES



STEPS FOR IMPLEMENTATION





Save the world by EMS

Assist. Prof. Dr Jovan PETROVIC

E-mail: jovanpet@uns.ac.rs

Tel: + 381 21 485 23 93